

Community Planning



Graphic purchased from Shutterstock: ID 582497641



D R A F T
Inglewood
Community Plan
2021 – 2031
Version 1.0



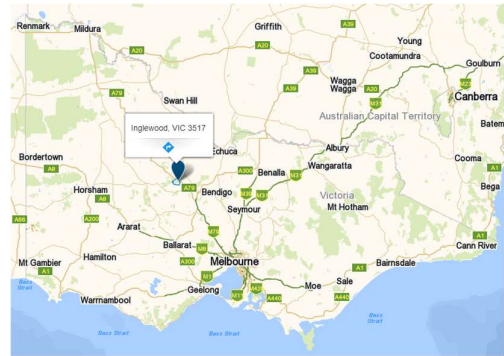
Contents

1.	Introduction - Inglewood then and now	1
2.	Community planning background.....	4
3.	Demographic summary.....	5
4.	Developing our plan.....	6
5.	Vision.....	7
6.	Purpose	7
7.	Our Goals	8
	Goal 1: Built environment and town beautification	8
	Goal 2: Improving where we live	8
	Goal 3: Tourism and marketing.....	8
	Goal 4: Community health and wellbeing	8
	Goal 5: Traffic Management	9
	Goal 6: Sport and recreation	9
	Goal 7: Social opportunities	9
	Goal 8: Heritage, arts and culture	9
	Goal 9: Natural environment	9
	Goal 10: Improving our local economy.....	9
	Goal 11: Connectivity: Internet and individual capacity	10
8.	Priorities and actions	11
9.	How we review our plan.....	32
10.	Acknowledgements.....	32

We acknowledge the First Peoples of what is now known as Inglewood, the Dja Dja Wurrung People. We acknowledge their longstanding, rich and resilient cultures, rights and responsibilities to Country, and genuinely pay respect to their knowledge holders, leaders and their Elders past, present and future.

1. Introduction - Inglewood then and now

Located in the Loddon Shire and situated 199 km from Melbourne on the Calder Highway, Inglewood is an historic gold mining town presenting a vision of the past. Inglewood forms part of the famous 'Golden Triangle' which encompasses some of the richest alluvial goldfields in the world.



Inglewood is located in Jaara Country with the Dja Dja Wurrung the Traditional Owners. There are recollections of corroborees taking place just north of the current town in the late 1850s and early 1860s. These corroborees reputedly occurred every few months usually during a full moon. Evidence of the Dja Dja Wurrung inhabitation can still be seen today in scar trees and artefacts.

The Loddon River is located approximately 7kms to the east of Inglewood and is the only permanent flowing water with several seasonal and intermittent creeks and watercourses closer to the township.

Inglewood's surrounding landscape is relatively flat, with sedimentary mudstone, slates and sandstone. Harder metamorphic rocks and sandstones often protrude as clusters of rocky hills such as Rose Hill (235m) that contrast with the relatively flat surrounding landscape. Granite intrusions also occur and often appear as distinguished clusters of huge boulders which are interesting to explore and climb. Mount Kooyoora (475m) and Mount Korong (364m) are examples nearby. Gold-bearing quartz reefs lie within these ancient sediments and provided much of the gold found in this region. Soils are generally shallow and date back to the Ordovician era (430- 500 million years ago) when this area was covered by ocean.

Inglewood falls within the Goldfields Bioregion and is surrounded by Sandstone Ridge Shrubland Ecological Vegetation Class (EVC 93) dominated by mallee eucalypt species particularly Blue Mallee, (*Eucalyptus polybractea*), Green Mallee, (*Eucalyptus viridis*) and Bull Mallee, (*Eucalyptus behriana*). The main town area is located within the Grassy Woodland EVC (EVC 175) and Grassy Woodland / Alluvial Terraces Herb-rich Woodland Mosaic EVC (EVC 76).



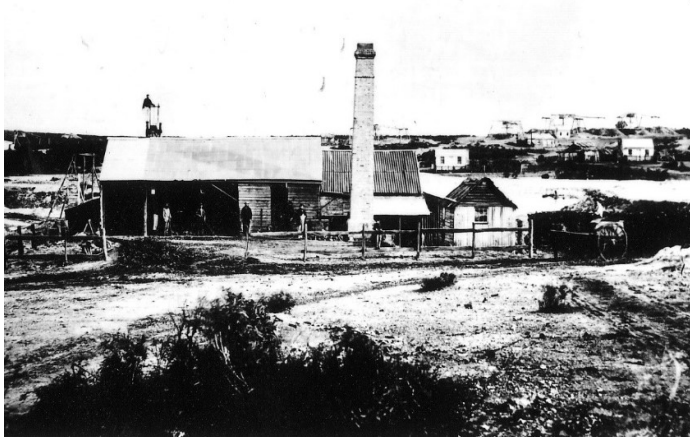
Above: Blue Mallee, Bull Mallee and Green Mallee (photo David Rose).

Inglewood is located in what was the north-eastern corner of the Glenalbyn Run held by the Reverend William Hall of Kingower.

Gold was first discovered in 1859 by Alexander, Joseph and Thomas Thompson, (nephews of Hall), and Joseph Hanny. By January 1860 a new field a few miles south of the original was opened up by Potter, Irvine and McKean and dubbed "New Inglewood". This is the site of the present township.

By mid-1860 the population on the field was estimated to be greater than 40,000, ranking among the biggest rushes in Victoria's history. The population soon dwindled as the easily won alluvial deposits became exhausted but, as early as 1859, quartz reefs had been discovered which resulted in the permanent settlement of a few thousand miners and businessmen.

Initial returns from the quartz reefs were significant. From the Columbian, 22 tons of stone crushed gave a return of over 2300 ounces of gold, one of the richest patches of gold recorded in the colony of Victoria.



Left: Lady Darling Crushing Machine (photo Inglewood & District Historical Society collection)

Numerous other reefs, including the Maxwell's, Jersey, March and Morning Star, gained renown for their rich yields.

In 1861 the town was proclaimed a municipality and in 1863 the Borough of Inglewood was established. Self-government continued for 100 years until the borough was annexed to the Shire of Korong.

In December 1862 one of the most destructive fires recorded in the colony at that time occurred in the town's main street. Much of the commercial precinct was burned to the ground, with damages estimated at over £100,000. As a result of the fire a transition from bark and canvass establishments to more substantial brick and iron structures occurred, many of which remain today forming part of Inglewood's unique main street.

Around the turn of the 20th century, gold production began to wane, and a new form of employment came to the fore. The eucalyptus oil industry established when it was found the leaves of the Blue Mallee produces some of the best quality eucalyptus oil in the world. In the early 20th century Inglewood became the centre for eucalyptus oil production in Victoria. The Inglewood district still produces a major portion of Victoria's eucalyptus oil.

Today, Inglewood is a vibrant community. It is the demographic centre and main service town for the Loddon Shire, with its hospital, supermarket, chemist, service station, community bank, two schools, kindergarten and various retail outlets. The antique and vintage ware shops offer an opportunity for day trip outings, with the motel and caravan park offering longer accommodation options.

Sport plays a big part in the community with football, netball, tennis, lawn bowls, cricket, golf and horse riding popular.

Many and varied community groups operate mostly on a volunteer basis. These groups play a vital role in promoting and encouraging economic development and tourism as well as managing and maintaining the unique historic buildings and community assets. Many volunteer groups also provide services to the community such as communal meals, internet access and pre-school children's services.

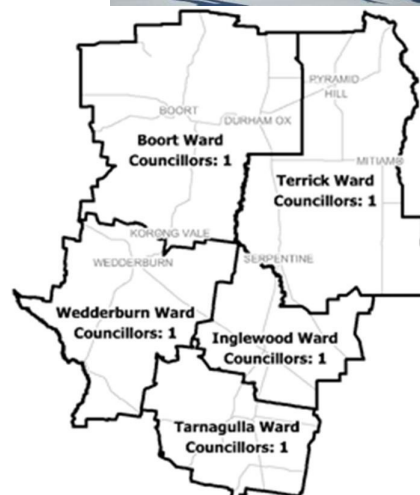


Left: One of the many vintage and antique stores in Inglewood and below: some of the treasures to be found (photos Wendy Murphy)



Left: active bowls club (photo Inglewood Bowling Club Facebook page).

Right: Inglewood netballers (photo Inglewood Football Netball Club Facebook page).



Graphic Purchased from Shutterstock: ID 490135921

Add more picture/s depicting our community

2. Community planning background

History of community planning

This is the fifth stage in the development of the Inglewood Community Plan. The first was the Inglewood Urban Design Framework, which was begun in 2002 and completed in April 2003. The second stage took place in January and February 2004. The third stage took place in 2004 when further public discussion focused on the progress to date and for further development and consolidation. Stage four was a public meeting held in 2008 which led to the development of the Inglewood Community Plan 2010.

The Inglewood community is proud of the many achievements made, an outcome of collaborative and combined efforts of many, benefiting the community in a number of ways. Some of the successful initiatives include:

- Eucalyptus Distillery Museum. Formally opened in 2011. A Loddon Shire appointed Section 65 committee manages the site and ongoing development and provides for tours and the establishment of the retail area operation.
- Arts park development (right)
- Public drinking fountain - 2013 (right)
- Community Hub - participation with the community hub feasibility development activities and the Community Planning submission (below right)
- Inglewood Railway Station Redevelopment
- Adventure park at sports precinct
- Industrial Park development



Tourism & Marketing

- Inglewood geographic domain community website – www.inglewood.vic.au
- Brooke Street flags, highlighting businesses open for business in a consistent manner for the town.
- Brooke St. Brochure.
- Blue Plaque Heritage trail, in conjunction with the Inglewood & District Historical Society (below right)
- Tourism Information Board 2012/3. This project replaced the community directory sign which was seriously outdated.
- Input to Streetscape project

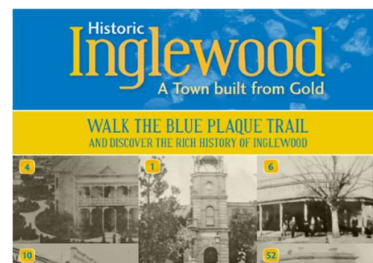


Community Celebrations

- Blue Eucy Festivals
- 150 Years of Gold, 1859 -2009
- Inglewood Alive Festival

Community Planning engagement

- Numerous community planning meetings to register, scope, and prioritise identified community projects. This has been an important function of the IDTC which has assisted many community projects to development. In conjunction with the Loddon Shire Community Planning team.
- Participation with the planning for the Railway Station redevelopment.



3. Demographic summary

The demographic data provided has been obtained from the 2016 Bureau of Statistics Census results.

The population of Inglewood (township) in 2016 was 730. There was modest growth of 0.02% from the 2011 census figures. The population of Inglewood was larger than in any other of the Loddon Shire towns (Wedderburn 652, Boort 725, Pyramid Hill 434, and Bridgewater 323).

The median age of our population is 53 compared with the Australian median age of 38. People over the age of 65 make up 34.4% of the population. The male population is 48.2% and the female population 51.8%.



In the 2011 census there were 182 families. Of these, there were 170 families with an average of 1.8 children. Of the families in Inglewood 34.1% were couple families with children, 49.4% were couple families without children and 14.7% were one parent families.

At the 2016 Census there were 371 private dwellings compared with 362 in 2011.

17.8% of occupied private dwellings were rented, 27.1% were owned with a mortgage and 47.9% were owned outright. 56.1% had internet accessed from a dwelling, 37.8% internet not accessed from a dwelling and 6.1% not stated.

81.6% of the population was born in Australia; 3.3% in New Zealand and 1.1% in each of Scotland, Germany and the Netherlands. Ten people identified as Aboriginal and/or Torres Strait Islanders. 86.6% of the population spoke only English at home. The only other response for language spoken at home was 0.4% Malayalam (one of 22 scheduled languages of India spoken by nearly 2.88% of Indians).



Of people aged 15 and over, 26.1% reported having completed Year 9 or below as their highest level of educational attainment; 14.0% reported having completed Year 10; 6.7% reported having completed Year 11; 7.0% reported having completed Year 12; 15.7% had completed a Certificate III or IV; 6.2% had completed an Advanced Diploma or Diploma and 4.7% reported having completed a Bachelor Degree level and above.

For people who reported being in the labour force, aged 15 years and over 51.5% worked full time, 35.2% worked part time, 10.1% unemployed and 3.1% away from work.

The most common occupations included labourers 22.3%, community & personal services workers 17.5%, technicians and trades workers 14.6%, managers 12.6%, clerical and administrative workers 8.7%. The median weekly personal income for people aged 15 years and over was \$439.00 compared to the Australian median of \$662.00.

References:

The demographic data provided has been obtained from the 2016 Bureau of Statistics Census results.

Towns in Time 2016

Timeseries data from 1981-2006 Censuses - Enumerated population from Census 2011 and 2016

https://www.planning.vic.gov.au/__data/assets/pdf_file/0015/327300/Inglewood-L-Vic..pdf

4. Developing our plan

Note – the early development stages of the Inglewood Community Plan was conducted during Covid-19 restrictions and was mostly done via online meetings and emails. The Loddon Shire Council's Community Planning Officer left the role in October 2020 with the position not filled during this critical early planning stage.

The IDTC held two 'Plan the Plan' meetings on 13 August 2020 and again on 1st October 2020.

At the August meeting the group reviewed the previous Community Plan to discuss what went well, what didn't go well, what was achieved and improvements that could be made.

Discussions of how the new plan would be developed were discussed and what the best way to gather information would be given Victoria was in lockdown due to Covid-19. It was resolved to

- Seek feedback through online surveys and hard copy surveys using the same questions for each. The online survey was conducted via the SurveyMonkey platform and the hard copy was distributed to Inglewood households with the Korong Newsletter mail out in September 2020. Residents were able to return their hard copy surveys to the Inglewood Post Office for not cost. Both surveys closed on September 17th.
- Emails were sent to community groups to promote through their networks.
- The surveys were promoted on the IDTC Facebook page and in the Korong Newsletter. Posters were put up around Inglewood in high foot traffic areas (i.e. IGA noticeboard, Brooke Street noticeboards and Post Office notice board).
- Five online forums were held.

At the October meeting the results of the surveys were reviewed. There were

- 27 hard copy surveys returned
- 7 online surveys completed
- 6 attendees to the online forums

The IDTC considered this to be quite successful engagement considering the restrictive environment of the time. Feedback from members who had been involved in the development of the previous plan indicated it was better engagement than for when the previous plan was developed. The surveys offered responders the opportunity to have an IDTC member call them to discuss their comments further. A total of five phone calls were made to follow up survey comments.

The surveys returned over 100 suggestions from the community. All age groups were represented, with the over 50 age group the most responsive.

All the suggestions were collated and put together in this plan.

5. Vision

Our vision is to promote Inglewood as a desirable town in which to reside, work and visit by advancing local economic, commercial, tourist and social initiatives and developing strong networking and inclusive Community Plans.

6. Purpose

The purpose of our Community Plan is to:

- Beautify and rejuvenate Brooke Street and prominent spaces around Inglewood to give residents a sense of pride in their town and encourage visitors and tourists to stop and visit.
- Provide safe movement of pedestrian, cyclists and vehicle drivers around Inglewood.
- Encourage new businesses, create points of interest and attractions to attract visitors and tourists to Inglewood.
- Improve physical and mental health outcomes for the community.
- Identify opportunities to improve safety in Brooke Street for vehicles and pedestrians.
- Identify opportunities to increase social events and activities to bring the community together.
- Identify heritage buildings and sites and advocate to protect them.
- Identify unique art opportunities and promote local artists.
- Collaborate with DELWP and Parks Victoria to identify strategic fuel reduction burns to protect our community.
- Investigate the best technology to ensure reliable internet connectivity for the community.



Graphic purchased from Shutterstock: ID 582497641

7. Our Goals

Goal 1: Built environment and town beautification

Beautify and rejuvenate Brooke Street and prominent spaces around Inglewood to give residents a sense of pride in their town and encourage visitors and tourists to stop and visit.

The 2010 Inglewood Community Plan included the *Inglewood Urban Design Framework*, (the *Framework*), developed by Michael Smith Landscape Architecture and Urban Design. The *Framework* was driven by what the community wanted to see happen in Inglewood. This document was utilised by the Inglewood Development and Tourism Committee, (IDTC), to identify key projects.

The *Inglewood Streetscape Masterplan* (the *Streetscape*) was developed in 2016. It was a joint venture by Loddon Shire Council and Outlines and again was developed in consultation with the community with their visions of Brooke Street. However, this was not well supported beyond the IDTC and mostly forgotten about.

Action 1: Revisit the *Inglewood Urban Design Framework* and *Inglewood Streetscape Masterplan* to identify the key components of each that could be reused to form a new Masterplan. Identify funding to produce a scoping document.

Action 2: Identify individual projects and scope them up to be shovel ready when funding opportunities present.

Goal 2: Improving where we live

Safe movement of pedestrians, cyclists and vehicle drivers around Inglewood

Loddon Shire Council infrastructure plan

Action 1: *Improve footpaths, roads and other infrastructure to ensure safe and connected movement to high use areas of Inglewood.*

Goal 3: Tourism and marketing

Encourage new businesses, create points of interest and attractions to attract visitors and tourists to Inglewood

Action 1: Update website – www.inglewood.vic.au

Action 2: Identify opportunities for new business to Inglewood

Action 3: Create points of interest in town to encourage visitors/tourist

Action 4: Seek new and exciting marketing opportunities

Goal 4: Community health and wellbeing

Improve physical and mental health outcomes for the community

Action 1: Create new and upgrade existing walking and cycling tracks between towns and within town.

Action 2: Install outdoor exercise equipment for community use

Action 3: Encourage groups to do more 'Get Up And Move' activities and events

Action 4: Have a local gym with access to all the community

Action 5: Cover and heat the swimming pool to enable all year round access and local aqua classes

Action 6: Rail / bus services

Goal 5: Traffic Management

Identify opportunities to improve safety in Brooke Street for vehicles and pedestrians

Action 1: Undertake a traffic management study

Action 2: Investigate a truck parking bay opposite Shell Service Station

Action 3: Investigate options for a truck bypass

Goal 6: Sport and recreation

Identify opportunities to enhance the sporting and recreation precinct to encourage use and participation

Action 1: Upgrade of the Community Sports Centre and playground facilities and infrastructure

Goal 7: Social opportunities

Identify opportunities to increase social events and activities to bring the community together

Action 1: Create a community garden

Action 2: Support and promote established groups and assets

Action 3: Community movie nights

Goal 8: Heritage, arts and culture

Identify and promote Inglewood's unique heritage buildings and sites and identify unique art opportunities that encourages tourism to Inglewood

Action 1: Identify heritage buildings and sites and advocate to protect them

Action 2: Identify unique art opportunities to promote local artists and attract tourism

Goal 9: Natural environment

Preserve, enhance or promote our natural environment

Action 1: Collaborate with DELWP and Parks Victoria to identify strategic fuel reduction burns to protect the town and important sites

Goal 10: Improving our local economy

Support local businesses and grow our local economy to retain current businesses and attract new businesses

Action 1: Promote current Inglewood businesses

Action 2: Attract new businesses

Action 3: Investigate options for child care

Action 4: Investigate options for elderly citizen units

Goal 11: Connectivity: Internet and individual capacity

Action 1: Investigate the best technology to ensure reliable internet connectivity for the community

8. Priorities and actions

The following chart will provide information that will support the progression of identified actions (above):

- the goal (from Our Goals section above)
- the actions (from Our Goals section above)
- to complete the action the projects can be further broken into tasks or activities (see our Priorities and Actions below)
- identify the likely responsible party or parties delivering the action; are there partnerships to be developed?
- what are the expected delivery timeframes (eg: Short term 1-2 years, Medium term 2-5 years, Long term 6+ years)
- what is the priority of the goal, action or task to the community (importance level): High, Medium, Low
- current status (at what stage is the project currently):
 - Idea (not yet started – just an idea at this stage)
 - Concept (some work has begun ie some early design work/plans have been completed, but more work is needed to be clarify the steps or tasks require to deliver)
 - Ready (for projects, the detailed designed is completed. For programs a delivery plan has been completed - project or program is ready to deliver/commence).

Goal	Action	Task	Partners	Timeframe	Priority	Status
1. Beautify and rejuvenate Brooke Street and prominent spaces to give residents a sense of pride in their town and encourage visitors and tourists to stop and visit.	1. Revisit the <i>Inglewood Urban Design Framework</i> and <i>Inglewood Streetscape Masterplan</i> to identify the key components of each that could be reused to form a new Masterplan. Identify funding to produce a scoping document.	1.1 Develop a working group to undertake revisit of <i>Inglewood Urban Design Framework</i> and <i>Inglewood Streetscape Masterplan</i>	<ul style="list-style-type: none"> • Loddon Shire Council • Business owners • Building owners • Interested residents 	Short: 1-2 years	High	Idea
	2. Identify individual projects and scope them up to be shovel ready when funding opportunities present.	2.1 Identify opportunities to infill grapevine planting on buildings and scope other shade planting or structure opportunities	<ul style="list-style-type: none"> • Building / business owners • Loddon Shire Council • Regional Roads Victoria 	Short: 1-2 years	High	Idea

Beautify and rejuvenate Brooke Street....cont'd		2.2 Repair and refresh buildings. Encourage owners to maintain their buildings in good repair and assist owners to find funding opportunities to undertake works.	<ul style="list-style-type: none"> • Building / business owners • Inglewood Development and Tourism Committee • Inglewood And District Historical Society (Historical Society) • • Real estate agents • Loddon Shire Council 	Medium: 3-5 years	Medium	<p>Ongoing discussions with building owners when they are available</p> <p>Many buildings have changed ownership in the last five years. Assistance provided by IDTC and Historical Society when requested.</p>
		2.3 Re-develop old service station site at southern end of Brooke St	<ul style="list-style-type: none"> • Loddon Shire Council 	Medium: 3-5 years	Medium	<p>Concept</p> <p>Revisit 2016 Streetscape Masterplan to review project idea for the site</p>

Beautify and rejuvenate Brooke Street....cont'd		2.4 Replace, rejuvenate and repair (where necessary) footpaths in Brooke Street to reduce the heat sink properties of the dark bitumen to a heat reflective surface more comfortable to walk on.	<ul style="list-style-type: none"> • Loddon Shire Council • Regional Roads Victoria • Business owners 	Medium: 3-5 years	Medium	Idea
		2.5 More seating in Brooke Street and other streets leading to high use areas (i.e. footpaths from Brooke St to Inglewood Districts Health Services (IDHS))	<ul style="list-style-type: none"> • Business owners • Loddon Shire Council • IDHS 	Medium: 3-5 years	Medium	<p>Concept</p> <p>Initial discussion with business and house owner in Brooke St to garner support for a sheltered seating area (between IGA and 38 Brooke St)</p> <p>Ham Park and Mitchell Park seating</p>
		2.6 Town Entry Signs	<ul style="list-style-type: none"> • IDTC • Community • Loddon Shire Council 	Medium: 3-5 years	Medium	Idea

Beautify and rejuvenate Brooke Street....cont'd		2.7 Town Hall Hub project- Stage 2. Restoration of the Town Hall.	<ul style="list-style-type: none"> • Inglewood Town Hall Community Asset Committee (CAC) • Inglewood Community Neighbourhood House • Loddon Shire Council 	Long: 6+ years	Medium	Concept Some plans in early stages.
		2.8 Putting powerlines in Brooke St underground	<ul style="list-style-type: none"> • Building and business owners • Powercor • Regional Roads Victoria • Loddon Shire Council 	Long: 6+ years	Medium	Idea Gathering details from Wedderburn and Maldon
		2.9 Soundshell or stage for community performances, concerts etc. Locations include Town Hall, Eucy Museum, Sports Centre, old service station site.	<ul style="list-style-type: none"> • IDTC • Town Hall CAC • Sports Centre CAC • Eucy Museum CAC • Loddon Shire Council 	Long: 6+ years	Low	Idea Idea for old dam at Eucy Museum site to be a sound shell has been discussed.

Beautify and rejuvenate Brooke Street...cont'd		<p>2.10 Emergency service precinct at south side of railway line</p> <p>Bring CFA, police, ambulance and Parks Victoria and Forest Fire Management together in one emergency service precinct.</p>	<ul style="list-style-type: none"> • Ambulance Victoria • Country Fire Authority, • Victoria Police • Parks Victoria • Department of Environment, Land, Water and Planning • Inglewood District Health Services 	Long: 6+ years	Low	Idea
2. Safe movement of pedestrians, cyclists and vehicles around Inglewood	1. Improve footpaths, roads and other infrastructure to ensure safe and connected movement to high use areas of Inglewood.	<p>1.1 Footpaths – repairs, connection, safety.</p> <ul style="list-style-type: none"> • footpath to connect the Inglewood Motel and Caravan Park to the town centre • better connecting footpaths 	<ul style="list-style-type: none"> • Loddon Shire Council 	Medium: 2-5 years	High	<p>Idea</p> <p>Loddon Shire Council infrastructure projects</p>

Safe movement of pedestrians....cont'd		1.2 Roads seal dirt roads in town	<ul style="list-style-type: none"> Loddon Shire Council 	Long: 6+ years	Medium	Idea Loddon Shire Council infrastructure projects
		1.3 Streetlights ensure safety for pedestrians at night	<ul style="list-style-type: none"> Loddon Shire Council 	Long: 6+ years	Medium	Idea Loddon Shire Council infrastructure projects
		1.4 Drainage upgrade drainage to reduce damage to footpaths and roads in heavy rain	<ul style="list-style-type: none"> Loddon Shire Council 	Long: 6+ years	Medium	Idea Loddon Shire Council infrastructure projects

Safe movement of pedestrians....cont'd		1.5 Nature Strips maintain to ensure clear movement and safety	<ul style="list-style-type: none"> Loddon Shire Council Property owners 	Medium: 3-5 years	Medium	Idea Loddon Shire Council infrastructure projects
3. Encourage new businesses, create points of interest and attractions to attract visitors and tourists to Inglewood	1. Update website – www.inglewood.vic.au	1.1 Set up working group to investigate improvements to current www.inglewood.vic.au website	<ul style="list-style-type: none"> IDTC 	Short: 1-2 years	High	<p>Working group has been established (3 people representing various groups and businesses). Reports back to IDTC.</p> <p>Costings made and new platform employed.</p> <p>Continually working on updating layout and information on webpage.</p>

Encourage new businesses....cont'd	2. Identify opportunities for new business to Inglewood	2.1 Business plan identifying what is needed in Inglewood, locating land, vacant shops and buildings	<ul style="list-style-type: none"> • IDTC • Tourism and Marketing Department at Loddon Shire Council • Building and business owners • Real estate agents • 	Short: 1-2 years	High	<p>Idea</p> <p>Inglewood Community Neighbourhood House producing 'Welcome Packs' for new residents</p> <p>IDTC produced volunteer group list and posted around town.</p> <p>IDTC annual COG volunteer expo</p>
	3. Create points of interest in town to encourage visitors/tourist	<p>3.1 Walking/cycling tracks in town – Botanical Gardens</p> <p>Walking/cycling tracks between towns</p> <ul style="list-style-type: none"> • Bul-a-bul Track between Inglewood and Bridgewater • Captain Melville Track between Inglewood and Kooyoora State Park 	<ul style="list-style-type: none"> • Loddon Shire Council • Inglewood District Health Services • Bridgewater On Loddon Group • Kingower Development and Tourism Committee • 	Medium: 2-5 years	High	<p>Bul-a-bul Track upgrade under way by Loddon Shire Council</p> <p>Concept design for unsuccessful Captain Melville Track. Alternative route options being explored.</p>

Encourage new businesses....cont'd		3.2 Murals / sculptures / artwork	<ul style="list-style-type: none"> • Building owners • Artists • Loddon Shire Council • Inglewood and Districts Historical Society 	Medium: 2-5 years	Medium	<p>Artist has been in discussion with RSL and IGA to paint murals on the walls.</p> <p>Inglewood and District Historical Society have identified prominent local residents to include in bronze bust sculptures in Pioneer Park</p> <p>IDTC plans for upgrade to mural on old Porter Store wall</p>
		3.3 Town Walks	<ul style="list-style-type: none"> • Inglewood and District Historical Society 	Medium: 2-5 years	Medium	<p>Historical Society members are developing a Vahland Walk and conduct town and cemetery walks for events.</p>

Encourage new businesses....Cont'd	4. Seek new and exciting marketing opportunities	4.1 Develop a tourism and marketing plan	<ul style="list-style-type: none"> • Tourism and Marketing Department at Loddon Shire Council • Business owners • Bridgewater On Loddon Group • Tourism providers • Tourism promotion groups • 	Medium: 2-5 years	Medium	<p>Loddon Shire Council Tourism and Marketing plan</p> <p>Visit Loddon Valley</p> <p>Contact with bill board promoters for display on billboard in Bridgewater</p>
4. Improve physical and mental health outcomes for the community	1.Create new and upgrade existing walking and cycling tracks between towns and within town.	1.1 Walking track from town and Inglewood Motel and Caravan Park to Botanical Gardens and around Reservoir	<ul style="list-style-type: none"> • DELWP • Parks Victoria • Dja Dja Wurrung Corporation • Loddon Shire Council • Inglewood and District Historical Society 	Medium: 2-5 years	High	<p>Loddon Shire have upgraded the reservoir wall</p> <p>Loddon Shire works at Botanical Gardens</p>

Improve physical and mental health outcomes....cont'd		1.2 Local bush track walks	<ul style="list-style-type: none"> • DELWP • Parks Victoria • Dja Dja Wurrung Corporation • Inglewood and District Historical Society • Loddon Shire Council • 	Medium:2-5 years	High	Idea
		1.3 Bullabul Track	<ul style="list-style-type: none"> • Loddon Shire Council • DELWP • Parks Victoria • Dja Dja Wurrung Corporation • VicTrack • Inglewood and District Historical Society • Bridgewater Fitness • 	Medium: 2-5 years	High	Loddon Shire upgrade works
		1.4 Captain Melville Walking Track	<ul style="list-style-type: none"> • DELWP • Parks Victoria • Dja Dja Wurrung Corporation • Loddon Shire Council • 	Long: 6+ years	High	Previous unsuccessful route and estimated cost by Loddon Shire Council

Improve physical and mental health outcomes....cont'd	2. Install outdoor exercise equipment	<p>2.1 Identify locations for outdoor exercise equipment</p> <p>Locations suggested include community sports centre, Mitchell Park, Gordon Park</p>	<ul style="list-style-type: none"> • Inglewood District Health Services • Loddon Shire Council 	High:1-2 years	High	Discussions between IDHS and IDTC to scope project and identify suitable grants
	3. Get Up and Move activities and events	3.1 Scavenger / Treasure hunts	<ul style="list-style-type: none"> • Inglewood And District Historical Society • Inglewood Community Neighbourhood House • Loddon Shire Tourism Department 	Medium: 2-5 years	Medium	<p>IDTC have had discussions on possible options</p> <p>Loddon Shire Tourism Dept have had treasure hunts in Wedderburn as part of attracting tourists</p>
		3.2 School holiday / after school activities	<ul style="list-style-type: none"> • Inglewood Community Neighbourhood House • DELWP • Parks Victoria • Loddon Shire Council • IPS and St Mary's PS 	Medium: 2-5 years	Medium	<p>ICNH host some school holiday programs</p> <p>Parks Victoria Junior Rangers – encourage PV to host an event in Inglewood</p>

Improve physical and mental health outcomes....cont'd		3.3 Stock Reservoir with fish and create fishing platforms	<ul style="list-style-type: none"> • DELWP • Victorian Fishing Authority • Loddon Shire Victoria • 	Medium: 2-5 years	Medium	Idea
		3.4 Encourage local events such as orienteering, bingo, fun sports days, trivia nights, outdoor movies	<ul style="list-style-type: none"> • Inglewood Community Neighbourhood House • Inglewood District Health Services • Inglewood Community Sports Centre • Local groups 	Medium: 2-5 years	Medium	Idea
	4. Town gymnasium	4.1 Identify locations to put a community gymnasium	<ul style="list-style-type: none"> • Inglewood District Health Services • Private health / gym providers 	Medium: 2-5 years	Low	Idea

Improve physical and mental health outcomes....cont'd	5. Rejuvenation of pool with a cover for all year-round use	5.1 Cover pool for year-round use including aquarobics, physio-pool, swimming lessons	<ul style="list-style-type: none"> • Inglewood District Health Services • Loddon Shire Council 	Long: 6+ years	Low	Cover for pool identified in previous Inglewood Community Plan
	6. Light rail passenger trains to Bendigo or upgrade bus services to Bendigo to enable easier access to physical and mental health services not offered in Inglewood	6.1 Advocate for the restoration of the railway between Inglewood and Bendigo	<ul style="list-style-type: none"> • Victorian State Government • VicTrack 	Long: 6+	Low	IDTC contact made with Railway Freight Alliance
5. Investigate traffic management options to improve safety in Brooke Street	1. Undertake a traffic management study	1.1 Engage consultant to undertake traffic management study	<ul style="list-style-type: none"> • Department of Transport • Private consultants • Loddon Shire Council 	Medium: 2-5 years	Medium	<p>IDTC have put together a list of traffic management options and ideas</p> <p>IDTC have made contact with Dept of Transport</p>

Investigate traffic management options....cont'd	2. Investigate a truck / caravan parking bay opposite Shell Service Station	2.1 Scope a design for a truck / caravan parking bay with tables and chairs and shelters	<ul style="list-style-type: none"> • DELWP • Department of Transport • Caravanning groups • Transport groups 	Medium: 2-5 years	Medium	Idea
	3. Investigate a truck bypass	3.1 Investigate options for a truck bypass route	<ul style="list-style-type: none"> • Department of Transport • Loddon Shire Council 	Long: 6+ years	Low	Some bypass options have been investigated in the past
6. Investigate opportunities and encourage greater involvement in physical activity for the whole community.	1. Upgrade of the Community Sports Centre and playground	1.1 Feasibility study for the upgrade of the Community Sports Centre	<ul style="list-style-type: none"> • Inglewood Community Sports Centre CAC • Inglewood Football Netball Club • Inglewood Cricket Club • Inglewood Tennis Club • Inglewood District Health Services • Loddon Shire Council 	Medium: 2-5 years	High	Loddon Shire scoping document???

Investigate opportunities and encourage greater involvement in physical activity....cont'd		1.2 Update skatepark equipment	<ul style="list-style-type: none"> • Inglewood Lions Club • Inglewood Community Sports Centre CAC • Loddon Shire Council 	Medium: 2-5 years	High	<p>Investigation of Pump Park</p> <p>IPS student letter and local children talking to Inglewood Ward Councillor</p>
		1.3 Upgrade football scoreboard	<ul style="list-style-type: none"> • Inglewood Football Netball Club • Inglewood Community Sports Centre CAC • Loddon Shire Council 	Medium: 2-5 years	Medium	<p>IFNC have project identified when funding becomes available</p>
		1.4 Upgraded netball rings, install basketball rings, install soccer goals	<ul style="list-style-type: none"> • Inglewood Community Sports Centre CAC • Inglewood Football Netball Club • Inglewood District Health Services • Loddon Shire Council 	Medium: 2-5 years	Medium	<p>Inglewood District Health Services have identified request for basketball rings and soccer goals in recent youth survey</p> <p>Local children talking to Inglewood Ward Councillor</p>

7. Identify opportunities to increase social events and activities to bring the community together	1.Support and promote established groups, services and assets	1.1 Create a community garden	<ul style="list-style-type: none"> • Inglewood Primary School • Inglewood District Health Services • Local community groups 	Short: 1-2 years	High	<p>IPS has an established garden used in cooking classes that can be opened up to the public as a community garden</p> <p>Local landholder interested in establishing a garden on his vacant block of land.</p>
		1.2 Support and promote established groups, services and assets	<ul style="list-style-type: none"> • Inglewood Community Neighbourhood House • Local community groups 	Short: 1-2 years	High	<p>IDTC COG volunteer expo</p> <p>ICNH 'Welcome Packs' to new residents</p>
		1.3 Community movie nights	<ul style="list-style-type: none"> • Inglewood Town Hall Hub CAC • Inglewood Community Neighbourhood House 	Medium: 2-5 years	Medium	IPS host annual movie nights at Town Hall

8. Identify and promote Inglewood's unique heritage buildings and sites and identify unique art opportunities that encourages tourism to Inglewood	1. Identify heritage buildings and sites and advocate to protect them	1.1 Update to heritage building and site register	<ul style="list-style-type: none"> Inglewood and District Historical Society Heritage Victoria Building and site owners 	Short: 1-2 years	Medium	Trevor Budge Heritage report for Loddon Shire
	2. Identify unique art opportunities to promote local artists and attract tourism	1.2 Identify unique art opportunities and promote local artists	<ul style="list-style-type: none"> Golden Palms Gallery Local artists 	Medium: 2-5 years	Medium	<p>Inglewood and District Historical Society bronze busts projects and collaboration with local artists to host exhibitions</p> <p>Golden Palms Gallery exhibitions</p>
9. Preserve, enhance or promote our natural environment	1. Collaborate with DELWP and Parks Victoria to identify strategic fuel burn opportunities	1.1 Identify areas of high fuel loads and important historical sites and significant environmental sites	<ul style="list-style-type: none"> DELWP Parks Victoria Friends of Kooyoora Inglewood and District Historical Society 	Medium: 2-5 years	Medium	DELWP and Parks Victoria provide opportunities for community input to fuel burn locations

10.Support local businesses and grow our local economy to retain current businesses and attract new businesses.	1.Promote current Inglewood businesses	1.1 Develop an Inglewood Go Local First campaign to promote support for our current local businesses and help to attract purchasers when they come up for sale	<ul style="list-style-type: none"> • Tourism and Marketing Department Loddon Shire • Real estate agents • Local business owners 	Short: 1-2 years	High	Inglewood Business Network Facebook page established
	2. Attract new businesses	2.1 Identify businesses that are needed in Inglewood and assist with finding suitable locations	<ul style="list-style-type: none"> • Tourism and Marketing Department Loddon Shire • Real estate agents • Local business owners 	Medium: 2-5 years	Medium	Idea
	3. Investigate options for child care	3.1 Feasibility study in to child care options and locations within Inglewood	<ul style="list-style-type: none"> • Inglewood Community Neighbourhood House • Loddon Shire Early Childhood Services • Private childcare providers • Inglewood District Health Services 	Medium: 2-5 years	High	<p>Working group formed to investigate childcare options</p> <p>Visits to towns to learn how they set up their childcare models</p>

Support local businesses and grow our local economy.....cont'd	4. Investigate options for elderly citizen units	4.1 Feasibility study into elderly citizen units options and locations within Inglewood	<ul style="list-style-type: none"> • Inglewood District Health Services • Inglewood Elderly Units CAC • Loddon Shire Elderly Citizen Services 	Medium: 2-5 years	Medium	Inglewood Health and Elderly Citizen Units CAC have developed a feasibility study
11. We want the best technology to ensure reliable internet connectivity for the community	1. Investigate the best technology to ensure reliable internet connectivity for the community	1.1 Map connectivity black spots and investigate best options to improve it on an individual basis	<ul style="list-style-type: none"> • Internet providers 	Medium: 2-5 years	Medium	Idea

9. How we review our plan

IDTC have agreed to review our Community Plan:

- **Annually:** Desk top review with community planning committee
- **Mid- term review (4-5 years):** Desk top and community engagement process to confirm existing priorities and identify new and emerging issues.
- **Full term:** Full review process undertaken

10. Acknowledgements

We would like to acknowledge the:

- Inglewood community for taking the time and effort to submit their ideas and suggestions during 2020 and all the Covid-19 restrictions.
- Members of the IDTC committee who pulled over 100 suggestions together to form this Community Plan
- Inglewood Historical Society for their knowledge and text around the history of Inglewood.