

We'll be with you!

The I CRC is keen to grow and expand our programs & services"
.....Manager, Kim



"A long awaited project to get our Town Hall back to work"
...Lyn, I DTC President

Our new Inglewood Community Hub



"I think we can make the music workshop work! That's a great idea"
.....I an, band player, tutor



Health Promotion
Tourist Information

New spaces

New ideas

New facilities

- Functions, dance and receptions

- Seminars and conferences

All existing programs continue

New programs

- music

- exercise

- crafts

- what would you like?



Craft groups

"We'll continue to use the training programs"
.....Manager, Laucke Flour Mill



Conventions



Our new Inglewood Community Hub

New ideas

New spaces

New facilities

New programs

New future



Courtesy - State Library of Victoria

Vision for the Hub

- ~ The Town Hall hub is a vibrant venue that reflects the town's history and culture, attracts an exciting range of activities and programs, and is used by a variety of community groups from across the region.
- ~ It is a focus for the region's special events, family and community celebrations; and educations, social support and enterprise initiatives.
- ~ It is viable because of the mix of user groups, programs, services and activities it accommodates, and the involvement of the people with the appropriate skills and abilities in its management.
- ~ It is a place the community is drawn to because it is welcoming, it has modern facilities, it is well managed and it is a place people want to be at because of what it symbolises about the community.
- ~ It is where people want to go to be a part of the community, and it represents what we want for our community - resilience, strength and solidarity.

The Community hub will breathe life back into the iconic Town Hall precinct and once again provide a vibrancy and central focus for the Inglewood and surrounding communities.

The existing Community Resource Centre will move to the renovated and much loved Town Hall building. The last key development at the hall was back in 1966. With new public toilets, updated kitchen and the building upgrade for disability access, its viability for the next fifty years and beyond is ensured. A new building integrated on the western side will incorporate a business hub with offices, meeting rooms, multi purpose rooms for music workshops, craft activities, exercise space and general training.

It will be a splendid community asset!



Internet Cafe

Further details and contacts

Tim Jenkyn Loddon Community Planning 03 5494 1200
Murray Baud Community representative 0409 309 090

Correspondence: Tim Jenkyn
Inglewood Community Hub Project,
Loddon Shire, PO Box 21
Wedderburn, VIC 3518
T.Jenkyn@loddon.vic.au



A community project team working with Loddon Shire



Alignment with Development Strategies



Loddon Shire Strategy

This project was spawned from Loddon Shire's commitment to community planning, and is aligned with their vision of: *a vibrant, welcoming and connected community which looks back on its past with pride and looks forward to a strong and prosperous future*". The Council endorsed this project in April 2011. The Loddon Shire Council Plan 2010-2014 defines activities and initiatives in Key Direction Areas and major areas for focus. Our hub project aligns with the key initiative of community services and recreation by enhancing the quality of life of all ages through provision of community services and support of community organisations.

The Hub project contributes additionally in several areas:

- Economic development - the business hub builds services for businesses, large and small.
- Township amenity - facilitates improved and better services for the community.
- Social connections - continually improving infrastructure to underpin social connections, social networks and reduces barriers to social participation.

Regional Development Victoria

The "Putting Locals First" Program supports investment in community facilities which are important in providing services, encouraging tourism and private investment, improving quality of life and the sustainability of towns. Supported activities relevant are building or upgrading shared community facilities such as public halls and facilities supporting integration of organisations delivering services, heritage projects including renewal of historic buildings and bringing state of the art technology and internet access to shared community facilities.

Regional Strategy Loddon Mallee

The 2010 Loddon Mallee Regional Strategic Plan (Southern Region) consists of key priority actions and key initiatives in each of 6 strategic areas. The plan drives the project development and aligns development funding from the various Regional Development Australia Fund and Victorian Regional Development initiatives. It is important to have alignment with these directions. So, does our project tick any boxes? Yes!



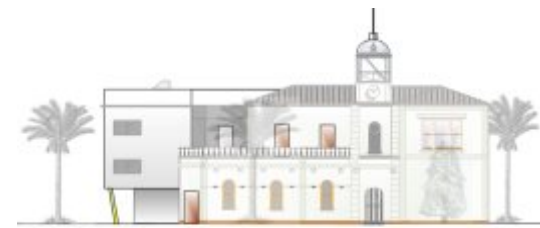
THE SOUTHERN LODDON MALLEE REGIONAL STRATEGIC PLAN					
STRATEGY 1:	STRATEGY 2:	STRATEGY 3:	STRATEGY 4:	STRATEGY 5:	STRATEGY 6:
Manage our population growth and settlements	Strengthen our communities, especially in our small towns.	Strengthen and diversify our economy	Improve our infrastructure	Improve education and training outcomes	Protect and enhance our natural and build environment
Project Alignment					
✓ KI 1.2	✓ PA 2.1 KI 2.4, 2.5, 2.6, 2.7, 2.18, 2.19, 2.21	✓ PA 3.1 KI 3.8, 3.11, 3.15	✓ PA 4.3 KI 4.12	✓ PA 5.1 KI 5.4, 5.5	Heritage preservation

Essentially, the new Inglewood Community Hub aligns with the regional development by:

- + providing updated and new facilities underpinning business training, growth and improving population retention and growth.
- + supporting outreach services, local government services, arts, health and social inclusion activities for the entire community.
- + a business hub stimulating local employment and provision of serviced offices underpins a capability for growth and employment opportunities.

Refer to Loddon Mallee Regional Strategic Plan - Southern Region and Progress Report No2 July 2011 to February 2012 for full descriptions of the various initiatives.

Concept Drawings for detailed design building plans



Southern Elevation Verdon Street



Western Elevation Market Street



Eastern Elevation Storm Lane



Verdon Street

Note: Dimensions, room areas and shapes may alter to match construction and building code requirements. Project staging may mean some areas may not be delivered in the first stage

Project Funding

Loddon Shire is promoting and supporting the project with Community Planning funds. Additional funding streams are being sought by philanthropic and business organisations who are willing to invest in the area. The balance of development funds will be sought from Regional Development Victoria (Putting Locals First) initiatives and Regional Development Australia Fund.

AT A GLANCE

A project for the community, delivering new capability, preserving our heritage and building for the future.

The Town Hall

- + Constructed in 1883 with a vision for the future. Superb architecture, functionality and an iconic clock tower, surrounded by unique palms. The main hall with stage, balcony, supper room, elegant staircase to upper floor chambers and outside balcony areas. Its vivid history as the past Borough Council chambers, band practice headquarters and picture theatre. The plan highlights:
- + Overall renovation to standards, retaining the precinct heritage and creating heritage display areas
- + New kitchen and storage areas
- + New glazed hub entrance on eastern side
- + New toilets to western side
- + Disability access to stage and upper floors

Inglewood Community

- A town and district with a rich history of gold mining, eucalyptus oil production and support town for the surrounding farming properties. A major town within Loddon Shire, the 2011 census reports the town and district is growing, linked with Bendigo growth and increased industry. Retail activity has increased with a focus on antiques and collectables, heritage with museums and food and coffee shop presence. It continues to support the surrounding farming communities and villages. The new plan refocuses the hall capability for:
- + Gala ball, dance, private functions, exhibitions, conventions
 - + Musical and theatre productions, school concerts
 - + Boutique cinema.....etc.
 - + Community meetings and gatherings

The Community hub

- + Craft and social inclusion groups
- + IDHS Health promotions
- + Fitness groups
- + Education and training
- + Mobile library, occasional childcare
- + "The Korong" & Inglewood web support
- + Community bus
- + Outreach services
- + Internet Café with NBN (when available)
- + Casual equipment hire
- + 181 m² renovated area plus 190 m²

The Business hub

- + An area supporting both large and small business activities
- + Board and meeting rooms
- + Business offices for hire
- + Multimedia facilities
- + Outreach business opportunities
- + Potential for government usage
- + Leverage NBN (when available)
- + 190 m² area plus use of additional hall lecture and multi purpose rooms